



2016-17 SEASON

NEW VICTORY®

THE NEW VICTORY® THEATER

A project of The New 42nd Street, a nonprofit organization

SCHOOL TOOL

RESOURCE GUIDES

The WAY Back HOME



PHOTO: TEATER REFLEKSON



THE NEW VICTORY THEATER

The New Victory Theater is New York City's first full-time performing arts theater for kids, their families and classmates. Since it opened in 1995, The New Victory has quickly become an integral part of the cultural landscape in New York City, presenting a full season of adventurous, multidisciplinary works from around the globe and close to home. The New Vic seeks out sophisticated, thought-provoking, professional productions that are as artistically rich as they are entertaining.

The international productions on NEW VICTORY stages inform and inspire the work of the award-winning NEW VICTORY Education Program through a dynamic combination of school and public programs. Our school programs serve over 40,000 Pre-K through 12th grade students and teachers each season at almost no cost to the kids or their schools. Many of our partners are NYC-area Title I schools, with a high percentage of students who would be unable to experience live theater if it weren't for The New Victory. The enthusiastic young people who greet you on your way into the theater are part of the New Vic Usher Corps, a 3-year program that provides 27,000 hours of paid employment for 75-80 high school and college-age youth each season. Families who attend the New Vic together combine their theater-going with NEW VICTORY Family Workshops, as well as free in-theater engagement activities. Together, these nationally-recognized programs exemplify the organization's long-standing commitment to the intrinsic value of cultural participation in the lives of young people and families.

NEW VICTORY® SCHOOL TOOL® Resource Guides

Available to Education Partners for every show in our season, NEW VICTORY SCHOOL TOOL Resource Guides provide educators with comprehensive materials that explore the artistry and key themes of each production. Filled with practical, ready-to-implement activities that allow any teacher to incorporate The New Victory into their classroom, the NEW VICTORY SCHOOL TOOL Resource Guides are designed to enrich the performance experience before, during and after the students' trip to the theater.

NEW VICTORY Education Partnership

The NEW VICTORY Education Department is committed to building impactful and long-lasting relationships with schools and after-school programs. We believe that creating strong and meaningful partnerships between schools and arts organizations allows school communities to deeply enrich their arts programs and infuse creativity across the curriculum. By annually enrolling in the unique and award-winning NEW VICTORY Education Partnership Program, schools take advantage of \$2 tickets to NEW VICTORY school-time and after-school performances, free classroom workshops led by highly skilled teaching artists, in-depth resources and professional development that allow teachers to incorporate the arts into their classrooms.

Making Connections to Learning Standards

NEW VICTORY SCHOOL TOOL Resource Guides align with the Common Core State Standards, New York State Learning Standards and New York City Blueprint for Teaching and Learning in the Arts. We believe that these standards support both the high quality instruction and deep engagement that The New Victory Theater strives to achieve in its arts education practice.

Please be advised that the unauthorized reproduction or distribution of NEW VICTORY® SCHOOL TOOL® Resource Guides for any purpose other than educational, such as for commercial or monetary gain, may constitute copyright infringement and may be punishable by law. For more information, please contact the NEW VICTORY Education Department at Education@NewVictory.org

CONTACT INFORMATION

209 W 42nd Street, New York, NY 10036
Education@NewVictory.org
646.223.3090



NEW VICTORY® SCHOOL TOOL® Resource Guides are made possible by a generous gift in memory of Fr. John R. Scarangelo, OFM whose lifelong passion for the theater was a powerful influence on all who were fortunate to know and love him.





The WAY Back HOME

INSIDE

- PAGE 5** Inside the Show/Company
A Closer Look
Where in the World
- PAGE 6** Inside the Art Form
- PAGE 7** Unit Plan Brainstorm

BEFORE

- PAGE 9** Activity: Adventures In Space
- PAGE 11** Resource for Families
- PAGE 12** Creativity Page: Up, Up and AWAAAAY!

EN ROUTE

- PAGE 13** Heads up!
- PAGE 14** Creativity Page:
My Very Own Planet
- PAGE 15** Trip Guide

AFTER

- PAGE 19** Performance Reflection
- PAGE 20** Activity: SpaceCRAFT
- PAGE 21** Activity: Out of This World
- PAGE 22** Creativity Page:
The Boy's Next Big Adventure!





INSIDE

A behind-the-curtain look at the artists, the company and the art form of this production

COMMON CORE STANDARDS

Reading: 1; 2; 3; 4; 5; 6; 7

Speaking and Listening: 1; 2; 3; 4; 5; 6

Language: 1; 2; 3

NEW YORK STATE STANDARDS

Arts: 1; 2; 3; 4

English Language Arts: 1; 2; 3; 4

Science: 4

BLUEPRINT FOR THE ARTS

Theater: Theater Making,
Developing Theater Literacy,
Making Connections

Visual Arts: Art Making,
Making Connections

Summary

When a boy discovers a single-propeller airplane in his bedroom, he does what any young adventurer would do: flies into outer space! When the plane begins to sputter and quake, our intrepid explorer must execute a daring landing on the moon. But never fear, he is not alone up there... Using intimate puppetry and original music, Ireland's Branar Téatar and Denmark's Teater Refleksion (*Songs from Above*, New Vic 2013) create a whimsical world in *THE WAY BACK HOME*, a story about friendship and the courage to conquer the unknown.



The WAY Back HOME





INSIDE

IMAGINATION + ADVENTURE
× FRIENDSHIP =

Where in the world is THE WAY
BACK HOME from?

AARHUS, DENMARK



GALWAY, IRELAND

THE WAY BACK HOME

A Closer look:

THE WAY BACK HOME is a production that is an adaptation of Oliver Jeffers's book of the same name. The show, which made its world premiere at the Dublin Theatre Festival in 2016, was created through a collaboration between Branar Téatar, from Galway, Ireland, and Teater Refleksion from Aarhus, Denmark.

Teater Refleksion and Branar Téatar both create innovative theater for young audiences that feature puppetry. Teater Refleksion creates poetic and imaginative theater performances for all ages. Their productions are simple in expression with a great sense of detail in both their puppeteering and set design. Teater Refleksion's productions use music, images, puppets and nonverbal communication to tell stories. Branar Téatar creates simple yet elegant theater for young audiences, using minimal sets and props. Their goal is to stimulate and challenge audience's imagination.

FUN FACTS

Denmark is an archipelago comprised of approximately 400 islands some of which are not even inhabited! The number of Danish islands changes every few years when nature creates and eradicates these small islands.

In THE WAY BACK HOME, the Boy flies a plane 238,855 miles to the moon! Thankfully, Teater Refleksion and Branar Téatar can board New York-bound airplanes from Denmark and Ireland for comparatively shorter flights: 3,745 miles and 3,064 miles, respectively!

THE WAY BACK HOME brings an endearing and imaginative story to life by combining unique puppetry, original music and set design by Mariann Aagaard. This production contains no dialogue, meaning that the characters never speak actual words. Instead, their actions and emotions are conveyed through sound, gesture, and visual imagery.

The WAY Back HOME



INSIDE / THE ART FORM

PUPPETRY

When an object is animated and manipulated by a performer giving the illusion of independent movement, this is known as puppetry! Examples of puppetry include the *Muppets*, *Sesame Street* and the Broadway production of *The Lion King*. There are many kinds of puppets such as marionettes, hand puppets, rod puppets and shadow puppets. In *THE WAY BACK HOME*, you may notice that cleverly hidden performers are using their hands to manipulate the puppets and making various sound effects to create characters, environment and emotions.

PAGE-TO-STAGE THEATER

Page-to-stage theater is a technique often used to bring literature, like children's books, to life. Artists work to capture the tone and spirit of the underlying material with respect for the original intent of the author. Through a collaborative design process, they incorporate many aspects of theatrical production, including character development, technical elements and storytelling to effectively connect with audiences. The creative team was inspired by Oliver Jeffer's enchanting book series that follows the adventures of the Boy. The production of *THE WAY BACK HOME* builds on the book's lush visual artistry in both its set and puppetry design.

WHAT DO YOUR STUDENTS KNOW NOW?

Prior to exploring *THE WAY BACK HOME* with your students, find out how much they already know about **PUPPETRY**. In addition, allow them to explore the themes: **TEAMWORK** and **IMAGINATION**.

Have you ever seen a play whose characters were all portrayed by puppets?

What type(s) of puppetry do you like best? Why?

*Have you ever read the book *The Way Back Home* before?
What about other books by Oliver Jeffer's?*

*Was there ever a time you had to work as part of a team?
How did that make you feel?*

What is imagination?

When is it fun to use your imagination?



The WAY Back HOME





INSIDE / UNIT PLAN BRAINSTORM

PLANES, TRAINS AND AUTOMOBILES (ELA, SCIENCE)

In *THE WAY BACK HOME*, the Boy imagines his bed as an airplane—but not just any airplane, an airplane that can fly through space! Go on a transportation scavenger hunt with your students to find different objects and pieces of furniture that could be re-imagined as a means of transportation! Then, when you've finished, brainstorm as a group which modes of transportation exist right here in New York City, and how they might be transformed into high-flying airships, undersea vessels and more! To support this unit, use the Creativity Page: *SpaceCRAFT* in the **After** section.

IT'S THE SAME, ONLY DIFFERENT! (ELA)

Blast off to the world of page-to-stage theater by examining the source material with your students! Sit in a circle, read *The Way Back Home* with your class and talk about how certain aspects and characters might be brought to life on stage. After you've seen the production at the New Vic, compare and contrast the play with the book you read together. Ask your students questions like *Which elements were the same as in the book? What was different between the play and the book? How could we, as a class, tell the story in our own way?* If you want to explore more, you can also read other Oliver Jeffers books about the Boy for additional context and inspiration! To support this unit, use the Creativity Page: *The Boy's Next Big Adventure* in the **After** section.

IT'S JUST A PHASE (ELA, SCIENCE, VISUAL ARTS)

Much of *THE WAY BACK HOME* takes place on a crescent moon. Use this as an opportunity to teach your students all about the phases of the earth's moon with a month-long observation project! Create and hand out a Phases of the Moon chart to your students (see the **Sources** page for an example!). Tell your students to look at the moon each night with their family and draw what they see in each box on the chart. Hint: As an active, engaging reminder of this project, post a large copy of the Phases of the Moon chart in your classroom and, every other day or so, have a volunteer draw in what they saw the night before. At the end of the month, have each student bring in their charts to compare what they observed all month! Then, lead a discussion about how the appearance of the moon changed throughout the month. As an added bonus, you could also discuss how and why the moon changes location in the sky throughout the year!





BEFORE

Ready-to-implement classroom activities that explore the themes and artistry of the show

COMMON CORE STANDARDS

Speaking and Listening: 1; 2; 6

Language: 1; 2; 3

NEW YORK STATE STANDARDS

Arts: 1; 2

English Language Arts: 1; 2; 3; 4

BLUEPRINT FOR THE ARTS

Theater: Theater Making,
Developing Theater Literacy,
Making Connections

Visual Arts: Art Making,
Making Connections



The WAY Back HOME





BEFORE / ACTIVITY

ADVENTURES IN SPACE

Take your class on a space adventure! Craft characters, discover planets and explore soundscapes with your students to spark new fascinations before for your students see **THE WAY BACK HOME!**

Materials Needed: Music/soundtrack for your space adventure, scissors, a hole punch, markers/crayons, a flashlight, the handout on the following page of this School Tool.

1. Tell your students to imagine that their desks are now a space station where they study planets, comets and asteroids! As astronauts and space explorers, they are fascinated with life on other planets and you want to see what they imagine planetary pals and aliens in space look like.
2. Have your students color in their new planetary pal on the handout provided. Help them punch out the two holes on the planetary pal's feet for their fingers to go through. Their fingers act as the planetary pal's legs! When they are done creating, collect everyone's planetary pals and let them know they will see them again soon.
3. Tell your students that today, they are going on a trip to outer space! As a class, get into an imaginary spaceship and blast off! Create a soundscape (sounds effects made with the body or different objects in the room that help to create environment and mood) as the class blasts off into space. Encourage your students to continue to explore sounds throughout the space adventure. *What sounds do you hear as we fly through the clouds and out of the earth's atmosphere? Here comes a meteor shower! What does it sound like as we dodge it?*
4. Let your spaceship crew know that it is very dark in outer space. To simulate space, turn off the lights in the classroom (or, to modify for more timid students, dim the lights). Use a flashlight as the headlight of your spacecraft to help you navigate through space!
5. Have students take note of some things they might pass by to fully visualize their dream space trip.
 - a. *Do you see the moon? What does the moon look like? Is it made of cheese? Of candy?*
 - b. *What does earth look like from way out here? How many other planets do you see? What are the planets' names? (HINT: These could be real or imagined)*
 - c. *See if you can see a comet or a shooting star! What does it look like? Where did it come from and where is it going?*
6. You see a planet in the distance! As a class, fly your spaceship to that planet and land on its surface. You are the first explorers to discover this planet, so you get to name it! Now your students are ready to put on their space helmets, exit the spaceship and explore.

Guide the journey:

- a. Touchdown! You have just exited your spaceship and landed on this planet. *What does it sound like when your feet touch the surface? Can you walk normally? Do you have to jump? Do you have to swim?*
 - b. *Can you hear music or sound on this planet? What does it sound like?*
 - c. Move your hands through the air on your planet - *does it make a sound? What does it sound like? How is the atmosphere different than the air on earth?*
7. Your team of space explorers have made yet another discovery – you have found life on this planet: planetary pals! Bring out the finger puppet planetary pals and have your students meet their new friends. Give your students time to explore this planet with their finger puppets. They can play games, tell stories and continue to listen to all the interesting sounds in outer space. To add to their experience, once they are done, make sure the students keep their finger puppets and bring them to the show!

REFLECTION QUESTIONS

What were some of your favorite moments from today's activity?

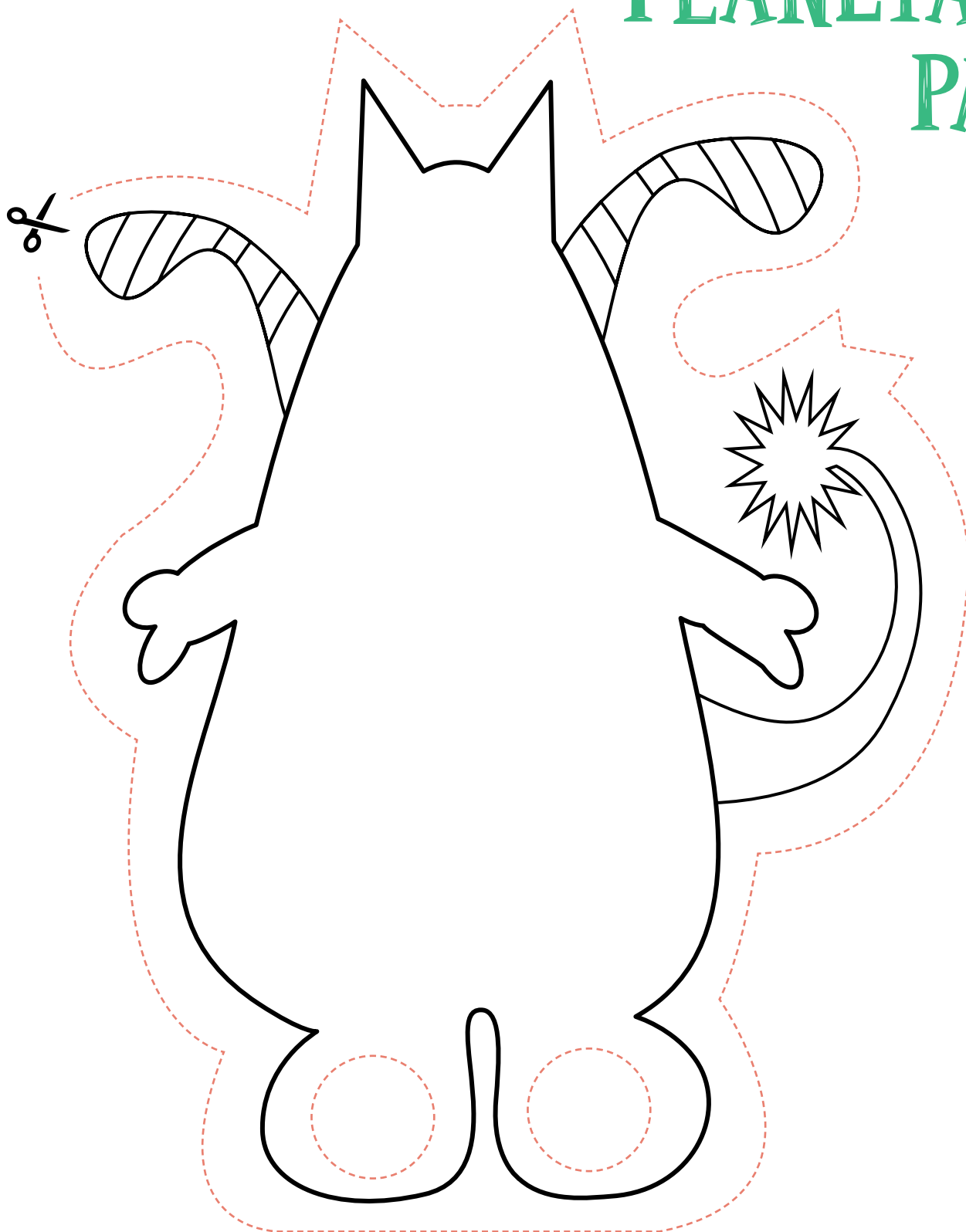
What was it like to bring a character you created to life?

The WAY Back HOME





WHO IS YOUR PLANETARY PAL?





BEFORE / RESOURCES FOR FAMILIES

Be a part of your kid's field trip! www.NewVictory.org/SchoolTool



WATCH



Check out the video trailer and a message from the company!

WWW.NEWVICTORY.ORG

While you're there, do the suggested Family Activities to learn more about the show.



ASK

Ask your kid BEFORE the show:

What do you think it will be like to see a show without any spoken words?

What are you most excited about for your trip to the New 42nd Street Studios?

Ask your kid AFTER the show:

What was your favorite part of the show?

Did anything about the show surprise you?

What did you think of the story being told with puppets?

What did you like? What didn't you like?

VISIT



The New Victory is New York City's only performing arts theater exclusively devoted to kids, their families and classmates, bringing exhilarating stories, innovative art forms and unparalleled performers from around the world to its historic stage in Times Square. For a full list of shows in the New Vic 2016-17 season, visit www.NewVictory.org.

The
WAY
Back HOME



CREATIVITY PAGE

UP, UP AND AWAAAAY!

It's time to head to outer space! In THE WAY BACK HOME, the Boy flies all the way to the moon using his bed as a spacemobile. If you could use any piece of furniture to fly to space, which would you choose? Imagine it as a spacecraft that can take you flying through the cosmos, then draw it!





EN ROUTE

Trip logistics and a brief student activity to be completed shortly before seeing the show.

Provide this section to all teachers and chaperones attending the show!

COMMON CORE STANDARDS
Reading: 1

NEW YORK STATE STANDARDS
Arts: 2

BLUEPRINT FOR THE ARTS
Visual Arts: Art Making,
Making Connections

Heads up!

THE WAY BACK HOME is about adventure, imagination, teamwork and conflict resolution. This production employs puppetry and non-verbal performance! It's also an adaptation of Oliver Jeffers's book by the same name. Prepare your students to watch closely and see how the Boy and the Martian are brought to life on stage! Additionally, the show is playing in the New 42nd Street Studios which creates an intimate cozy space for the littlest theatergoers.



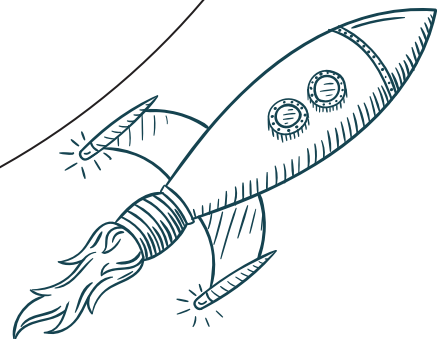
The WAY Back HOME



CREATIVITY PAGE

Your Very Own Planet

Create a planet inspired by the first letter of your name!
Draw the first letter of your name in the center.
Then fill your planet with things that start with that letter!



TRIP GUIDE

Provide this resource to the School Trip Leader and all teachers/chaperones attending the performance.

Before you leave school

We advise you to LEAVE ALL BAGS AND LUNCHES at school, if possible. If not, bags will be collected by NEW VICTORY staff and stored during the performance.

Plan to arrive at the NEW VICTORY venue at least 30–45 minutes before curtain time. The building opens one hour prior to curtain (i.e. 10am for an 11am performance). If you realize that your group is running late, please contact the theater DIRECTLY at **646.223.3020**. If you will be arriving by bus, please ensure that your driver drops your group off on the **north side** of 42nd Street between 7th and 8th Avenues.

Arrival

When you reach 42nd Street, a member of the NEW VICTORY Front of House staff wearing a green vest will check in with the school trip leader.

If you arrive by bus, they will direct your bus to a location on the street where it is safest to unload the students.

It is important to wait until our staff checks in the School Trip Leader and Bus Driver before unloading the students.

They will record the bus number and give the School Trip Leader and the Bus Driver correlating tags.

Please remember to have the School Trip Leader and the Bus Driver exchange cell numbers.

The Front of House staff will give a time for the bus to return to pick up your school group.

The question of lunch

NEW VICTORY venues are not equipped to host lunch/snacks. In the early autumn and spring months, nearby Bryant Park (42nd Street at 6th Avenue) offers a pleasant place for lunching, and there are also public restroom facilities.

Seating

In order to make your experience at the theater as efficient and safe as possible, you will not be issued tickets. Your group will be assigned seats in advance by the Education Department. Your seating assignment will not be available prior to the performance. If you have any questions, please contact the Education Department at: Education_Tickets@NewVictory.org.

Accessibility

Wheelchair seating must be requested in advance, at the time of the ticket request, and is subject to availability. Assisted listening devices are available for patrons who have hearing impairments.



TRIP GUIDE

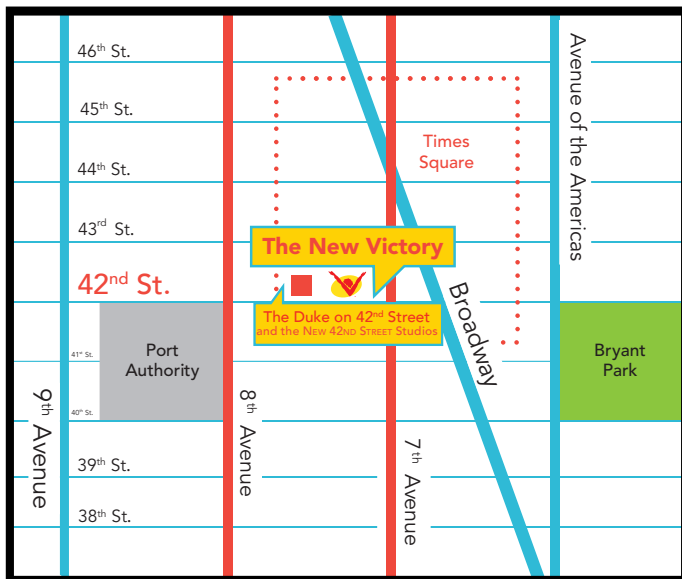
If you are traveling by bus, please also share this important information with the bus driver.

Directions to

THE NEW VICTORY THEATER OR THE DUKE ON 42ND STREET/
NEW 42ND STREET STUDIOS
209 West 42nd Street **229 West 42nd Street**

BY SCHOOL BUS

It is safest to drop off and pick up your school group on **the north side of the street** in front of the venue. Turn onto 42nd Street from 7th Avenue so students can unload in front of the theater space.



During the show

42nd Street is extremely congested and has a high volume of traffic. According to the New York City Department of Transportation, vehicles are not allowed to sit idle or park on the street without special permission. Once your bus is empty, it is important that the bus driver find parking at a nearby location—see possible parking locations below.

If a driver chooses to park on 42nd Street, they do so at their own risk of being ticketed by the police. The New Victory Theater is not responsible for bus drivers who receive parking tickets.

Possible parking locations

8th Avenue (both sides) between 38th and 39th Streets
11th Avenue (both sides) between 39th and 40th Streets

Pick up

Taking Midtown traffic into consideration, bus drivers should leave their waiting location approximately 10 minutes prior to the return time given by the Front of House staff. Front of House staff will also help find a spot on 42nd Street to safely load your student group after the show has ended.

BY MTA, SUBWAY OR BUS

1/2/3, N/R/Q/W/7

Exit the station at 42nd Street/7th Avenue. When you come out of the turnstile, take the stairs to your right. All NEW VICTORY venues are directly to the west of the subway station.

A/C/E to Port Authority

Exit at 42nd Street/8th Avenue. Walk to 42nd Street, turn east, and continue walking until you arrive at NEW VICTORY venues.

B/D/F/M

Exit at 42nd Street/6th Avenue. Walk west on 42nd Street until you come to 7th Avenue. The venues are on the north side of the street at 7th Avenue, next to the subway station.

The M10, M16, M27, M42, M104 buses all stop within one block of the venues.





AFTER

Ready-to-implement classroom activities that offer the opportunity to reflect on and extend the experience of attending the performance

COMMON CORE STANDARDS

Reading: 1

Writing: 3

Speaking and Listening: 1; 2; 3; 4; 6

Language: 3

NEW YORK STATE STANDARDS

Arts: 1; 2; 3

English Language Arts: 1; 3

BUEPRINT FOR THE ARTS

Theater: Theater Making,
Developing Theater Literacy,
Making Connections

Visual Arts: Art Making,
Making Connections



The WAY Back HOME





AFTER / PERFORMANCE REFLECTION

Following your trip to The New Victory, you may find that your students want to discuss the performance and their opinions. Reflecting on the show and voicing an aesthetic response is an important part of the theater-going experience. Allowing your students the opportunity to articulate their own thoughts and hear the ideas of their classmates will increase the impact of the theater experience.

Engage in a conversation with your students regarding their thoughts and feelings about the show. Use the following questions as prompts:

What were your favorite moments in the show?

What did you notice about the puppets?

How did the story make you feel?

Did the story remind you of the book? How so?

How did it differ from the book?



TEACHER TIP

Engaging in dialogue, asking questions and recalling observations are skills that we believe should be fostered and encouraged. When leading a performance reflection discussion, try the following model of critical response:

Describe (*I saw...*)

Analyze (*I wonder...*)

Interpret (*I think/feel...*)

Evaluate (*I believe...*)

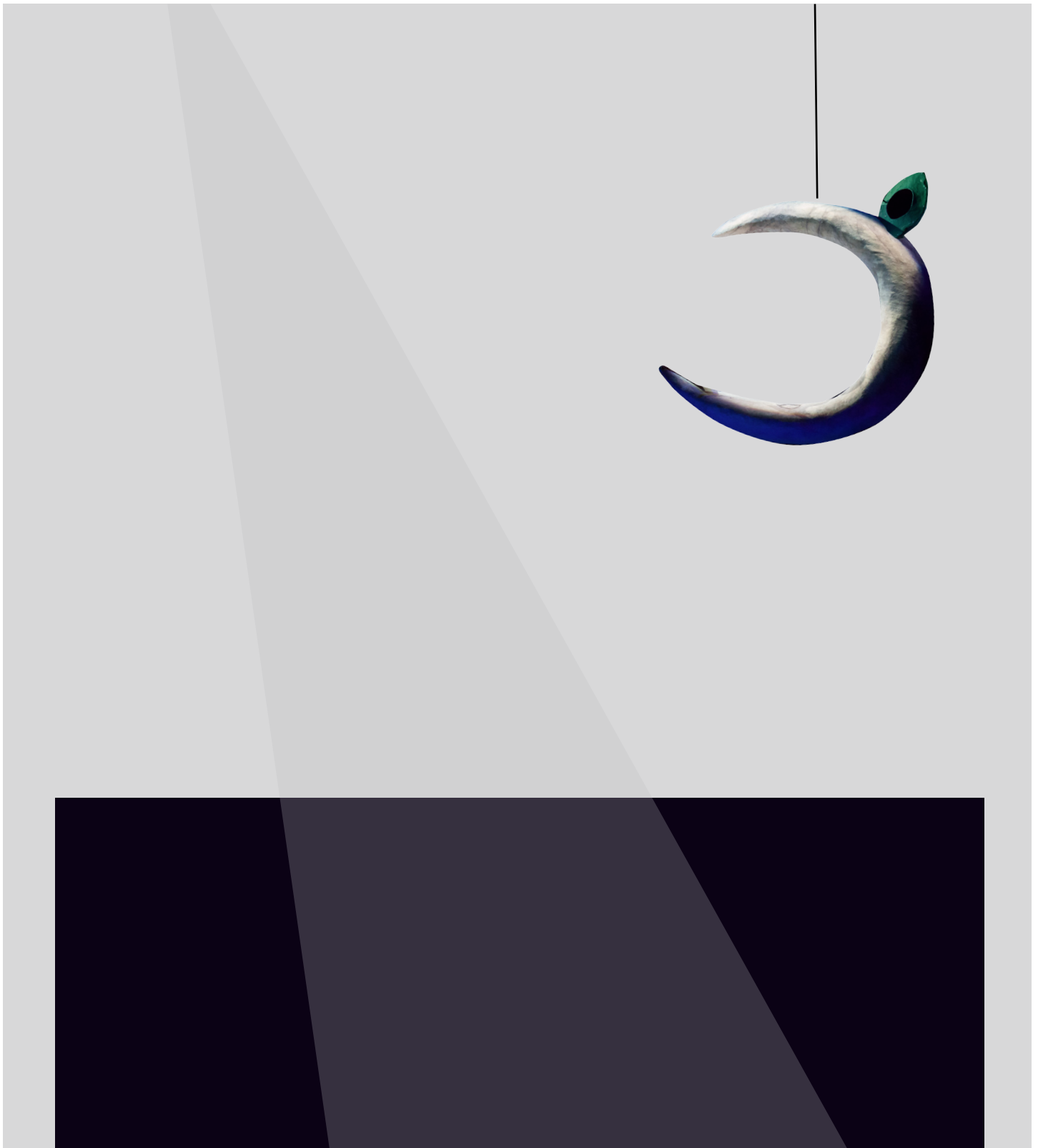
The WAY Back HOME





AFTER / PERFORMANCE REFLECTION

Use the space below to draw your favorite moment from THE WAY BACK HOME.
Think about the sights, sounds and puppets and visually recreate one of the scenes from the play!



CREATIVITY PAGE

SPACECRAFT

Time to get crafty! In THE WAY BACK HOME, the boy uses his imagination to propel into outer space. Use your imagination and, in the outline below, create your very own spacecraft! Use lots of colors and designs to make your spacecraft an out-of-this-world creation!





AFTER / ACTIVITY

OUT OF THIS WORLD!

By now your students have developed strong visuals for their idea of outer space. They have also seen the puppeteers at work in *THE WAY BACK HOME*. Now it's time for them to become puppeteers themselves!

Materials Needed: A long roll of blank butcher paper, markers/crayons, spacecraft created in the Performance Reflection (optional)

1. Roll out a long sheet of blank paper on your classroom floor and have your students take up crayons and/or markers and create a space backdrop! Hint: You can draw an outline for them to color in or have them draw freeform. Encourage them to draw a variety of space elements like planets, suns, stars, moons, spaceships, comets, galaxies, etc.
2. Hang your space drawing across the board—you now have a space wall!
3. Help your students cut out their spaceship from their Performance Reflection and have them fly through space against the space wall!
 - a. Optional: to expand, your students can also bring along their planetary pals if they still have them!
4. Just like the Boy and the Martian are faced to solve a problem to return home safely, present your students with some imagined obstacles and have them brainstorm solutions. Some ideas are:

- a. *Their spacecraft ran out of gas!*
- b. *A meteor came and hit the side of the planet they were playing on!*
- c. *It started to rain on their planet and the engine of their spacecraft was flooded!*
- d. *Their space-train back home never showed up!*

5. After they have explored space using their imaginations, have them land back in the classroom. Circle up as a class and go around asking for volunteers to share solutions to the problems presented.



The WAY Back HOME



CREATIVITY PAGE

THE BOY'S NEXT BIG ADVENTURE!

You know the adventures of the Boy and the Martian in space. Now it's time for you to illustrate the sequel to THE WAY BACK HOME! The Boy is about to go on another adventure. Where will he go? Why is he going? What will he use to get there? Who does he meet? How will he get back?

You tell the story! Draw and color it on the pages below. Also, you can use words if you'd like to help tell the story!





Sources

<http://refleksion.dk/en/>

<http://branar.ie/>

<http://www.visitdenmark.com/denmark/fun-facts-about-denmark>

<http://denmark.dk/en/>

<http://www.discoveringireland.com/irish-mythology/>

PHASES OF THE MOON CHART

<https://s-media-cache-ak0.pinimg.com/originals/8a/e6/89/8ae689ada49861ed96e4e00872a0b9db.jpg>



The
WAY
Back HOME

